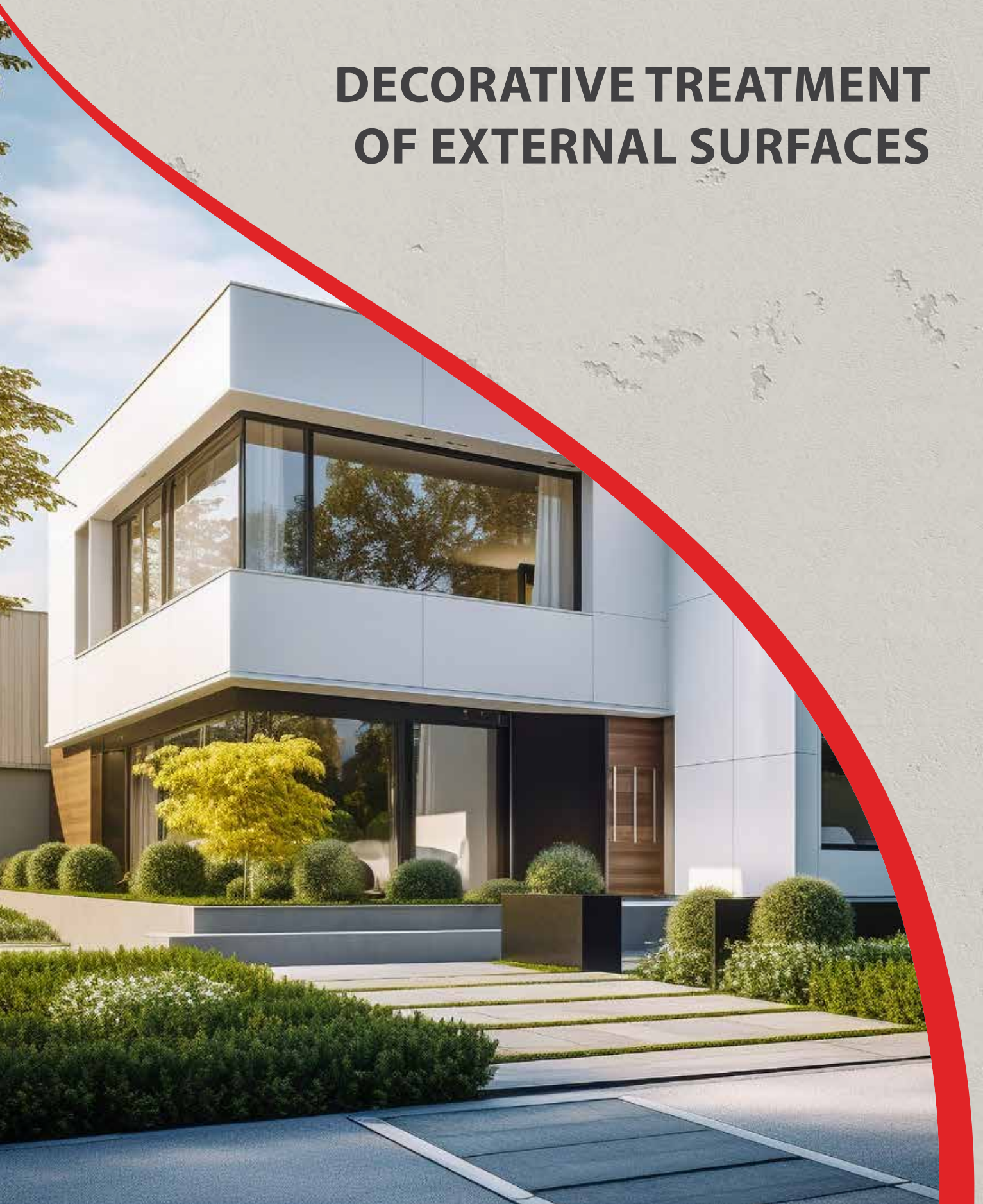




DECORATIVE TREATMENT OF EXTERNAL SURFACES



JUBIZOL

Decor





INTRODUCTION

The final treatment of the facade is more than just a finishing layer – it is the visual signature of the building, expressing its character, harmony with the environment, and architectural concept. With modern materials and techniques, we can breathe life, depth, and uniqueness into the facade.

Various textures and treatments are available – from completely smooth to roughly structured, from orderly linear patterns to unevenly textured structures.

All these structures, forms, and optical divisions create a sense of variety and dynamics. With these solutions, the surface is not merely a flat facade but becomes an active part of architectural expression – a field of interplay of light, shadow, and rhythm.

This brochure takes you on a journey through the world of possibilities offered by modern facade treatment, so you can create not just a protective shell but a story of the building and the space in which it is situated.

A photograph of a modern building facade. The building features large glass windows and a balcony with a glass railing. The facade is composed of light-colored panels and dark vertical slats. The text 'Decorative TECHNIQUES' is overlaid on the right side of the image.

Decorative TECHNIQUES

JUBIZOL Decor

Standard (p. 6-13)



Rough (p. 14-19)



Smooth (p. 20-25)



Concrete (p. 26-37)



Lines (p. 38-49)



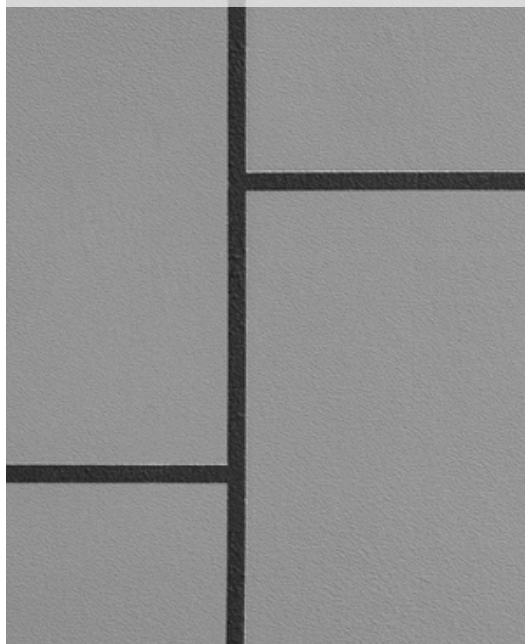
Imitation (p. 50-61)



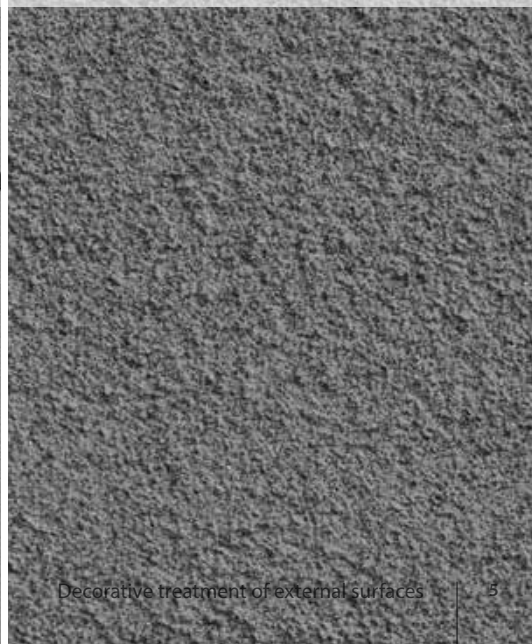
Free-style (p. 62-67)



Panels (p. 68-71)



Glitter (p. 72-75)





JUBIZOL Decor

STANDARD

Standard traditional facade surface treatment

STANDARD

Standard/traditional treatments of facade surfaces

The most commonly used facade treatments include smooth, trowelled, and machine-applied render finishes, which provide a timeless traditional look. These techniques allow for a variety of final textures and levels of graininess – from almost smooth to more textured surfaces. Due to their proven durability and aesthetic versatility, they are an ideal choice for both modern and classic architectural solutions.



STANDARD SMOOTH -
S1.0mm / S1.5mm / S2.0mm / S2.5mm



STANDARD SPRAY -
S1.0mm / S1.5mm / S2.0mm / S2.5mm



STANDARD TROWELLED -
T 2.0mm / T 2.5mm



STANDARD ROLLER -
S1.0 mm / S2.0mm



STANDARD SMOOTH

S1.0mm / S1.5mm / S2.0mm / S2.5mm

Smooth render finish

✦ Process:

Preparation

JUBIZOL Unigrund should be of a similar shade as the final finishing.

Application

- The render finish is applied manually with a stainless-steel smoothing trowel at a thickness just above the diameter of the thickest grain.

Structuring

- Immediately after application, the surface is smoothed with a hard plastic trowel.
- We smooth in circular motions until we achieve an evenly grained structure.
- When smoothing, the grains in the applied mortar layer should only move slightly.

Finishing

- The lumps of mortar are lightly pressed with a stainless-steel smoothing trowel a few minutes after smoothing.

✦ Tools:

- stainless-steel smoothing trowel
- plastic trowel

Calculation of material consumption For executing the technique:

JUBIZOL smooth decorative render finish:	Informative consumption*
S1.0 mm	2.1 kg/m ²
S1.5mm	2.5 kg/m ²
S2.0mm	3.0 kg/m ²
S2.5mm	5.0 kg/m ²

* The consumption of decorative render finishes is informative, based on granulation – accurate information can be found in the technical data sheet for each JUBIZOL decorative render finish.

STANDARD TROWELLED T2.0mm / T2.5mm

Trowelled render finish

✦ Procedure:

Preparation

JUBIZOL Unigrund should be of a similar colour shade as the final finish.

Application

- The render finish is applied manually with a stainless-steel smoothing trowel at a thickness equal to the diameter of the largest sand grain.

Structuring

- A few minutes after application, the surface is trowelled with a hard plastic smoothing trowel, by „rolling“ the structural sand grains over the wall substrate and evenly texturing the application.
- Trowelling can be done horizontally, vertically, or in a circular direction.

T2.0mm

Finishing

- The render finish lumps are lightly pressed in with a stainless smoothing steel trowel a few minutes after trowelling.

T2.5mm

✦ Tools:

- stainless-steel smoothing trowel
- plastic smoothing trowel

Calculation of material consumption for executing the technique:

JUBIZOL trowelled decorative render finish: Informative consumption*

T 2,0mm 2.5 kg/m²

T 2,5mm 3.2 kg/m²

* The consumption of decorative render finishes is informative, based on granulation – accurate information can be found in the technical data sheet for each JUBIZOL decorative render finish.

STANDARD ROLLER

S1.0 mm / S2.0 mm

Structuring render finish
with a roller

✦ Procedure:

Preparation

JUBIZOL Unigrund should be of a similar colour shade as the final finish.

Application

- The render finish is applied manually with a stainless-steel smoothing trowel at a thickness equal to the diameter of the largest grain.
- The surface is not smoothed but evenly levelled.

Structuring

- Immediately after application, the surface is treated with a roller.
- The roller should be well filled with render finish before use to create a uniform, pronounced structure.

Finishing

- Roll vertically, horizontally, or diagonally.
- Always start at the extreme edges of the facade and adjust the direction based on the size of the surface.

✦ Tools:

- stainless-steel smoothing trowel
- JUB facade roller 25

S2.0mm

S1.0mm

Calculation of material consumption For executing the technique:

JUBIZOL smooth decorative render finish: Informative consumption*

S1.0 mm 2.1 kg/m²

S2.0mm 3.0 kg/m²

* Execution is also possible with JUBIZOL smooth render finish S1.5 mm / S2.5 mm

STANDARD SPRAY

S1.0mm / S1.5mm / S2.0mm / S2.5mm

Sprayed application of render finish

✦ Procedure:

Preparation of substrate

JUBIZOL Unigrund should be of a similar colour shade as the final finish.

Preparation of equipment

Use a compressed air plastering gun or a high-pressure pump according to the equipment manufacturer's instructions.

Application

- First coat: apply evenly to cover the substrate, ensuring it does not begin to drop.
- Second layer (wet on wet application): structure the substrate with circular motions until achieving a uniform appearance.

Finishing

- Do not imprint sharp grains to maintain a coarse texture.

✦ Tool:

- Specific machine for applying decorative render finishes.



Calculation of material consumption For executing the technique:

JUBIZOL smooth decorative render finish:	Informative consumption*
S1.0 mm	2.1 kg/m ²
S1.5mm	2.5 kg/m ²
S2.0mm	3.0 kg/m ²
S2.5mm	5.0 kg/m ²

* The consumption of decorative render finishes is informative, based on granulation – accurate information is available in the technical data sheet of each JUBIZOL decorative render finish. ** Possible implementation with JUBIZOL smooth render finishes based on silicone and acrylic.



S1.0mm



S1.5mm



S2.0mm



S2.5mm



JUBIZOL Decor

ROUGH

Rough finish of facade surface

ROUGH

Rough finish of façade surface

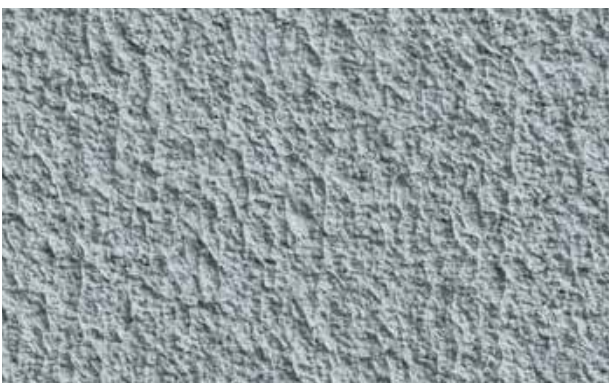
This decorative finish provides a bold, robust look with a distinctive texture that emphasizes the architectural character of the building. It allows for flexible options of the final finish, including the possibility of contrast in the surface structure. It is ideal for façades that need a unique, rough look while also offering excellent protection of the façade surface against environmental impacts.



ROUGH - 1



ROUGH - 2



ROUGH - 3



ROUGH - 1

Smooth treatment of very coarse render finish

✦ Procedure:

Preparation

JUBIZOL Unigrund should be of a similar colour shade as the final treatment.

Application

- JUBIZOL Decor Volcano is applied manually with a stainless-steel smoothing trowel at a thickness slightly above the diameter of the largest grain.

Structuring

- Immediately after application, smooth the render finish with a hard plastic smoothing trowel in circular motions to achieve an even grain structure.
- The grains should not move too much; the compound must not accumulate in a wave in front of the trowel (this is due to excessive thickness of the application or an uneven substrate).

Finishing

- A few minutes after smoothing, slightly press protruding lumps of render finish with a stainless-steel smoothing trowel.

✦ Tools:

- stainless-steel smoothing trowel
- hard plastic smoothing trowel

Calculation of material consumption for executing the technique:

Product	Consumption / m ²
JUBIZOL Decor volcano	6.4 kg/m ²

*Choose any colour shade from the selection of possible shades. according to JUB colour chart

ROUGH – 2

Roughly textured structure of coarse render finish

✦ Procedure:

Preparation

JUBIZOL Unigrund should be of a colour shade similar to the final finish.

Application

- Apply JUBIZOL Decor Volcano manually with a stainless-steel smoothing trowel at a thickness slightly above the diameter of the coarsest grain.
- Level the surface after application.

Structuring

- Immediately after levelling, shape it with a road broom (approximately 30 cm wide, with hard plastic bristles).
- Lightly tap/press the broom into the render finish to achieve a uniform grainy and rough look while simultaneously removing excess material.

Finishing

- Ensure that the render finish pulls are not too large to prevent sagging of the grains.
- The substrate should have a uniformly textured appearance.
- Do not rub the lumps of mortar protruding from the substrate, as they highlight the rough structure.

✦ Tools:

- stainless-steel smoothing trowel
- road broom

Calculation of material consumption for executing the technique:

Product	Consumption / m ²
JUBIZOL Decor Volcano	6.4 kg/m ²

*One can select any colour shade from the range of possible shades according to JUB colour chart.

ROUGH – 3

Roughly extracted structure of coarse render finish

✦ Procedure:

Preparation

JUBIZOL Unigrund should be of a similar colour shade as the final finish.

Application

- JUBIZOL Decor Volcano is applied manually with a stainless-steel smoothing trowel at a thickness of the largest grain diameter.
- The surface is not smoothed but evenly levelled.

Structuring

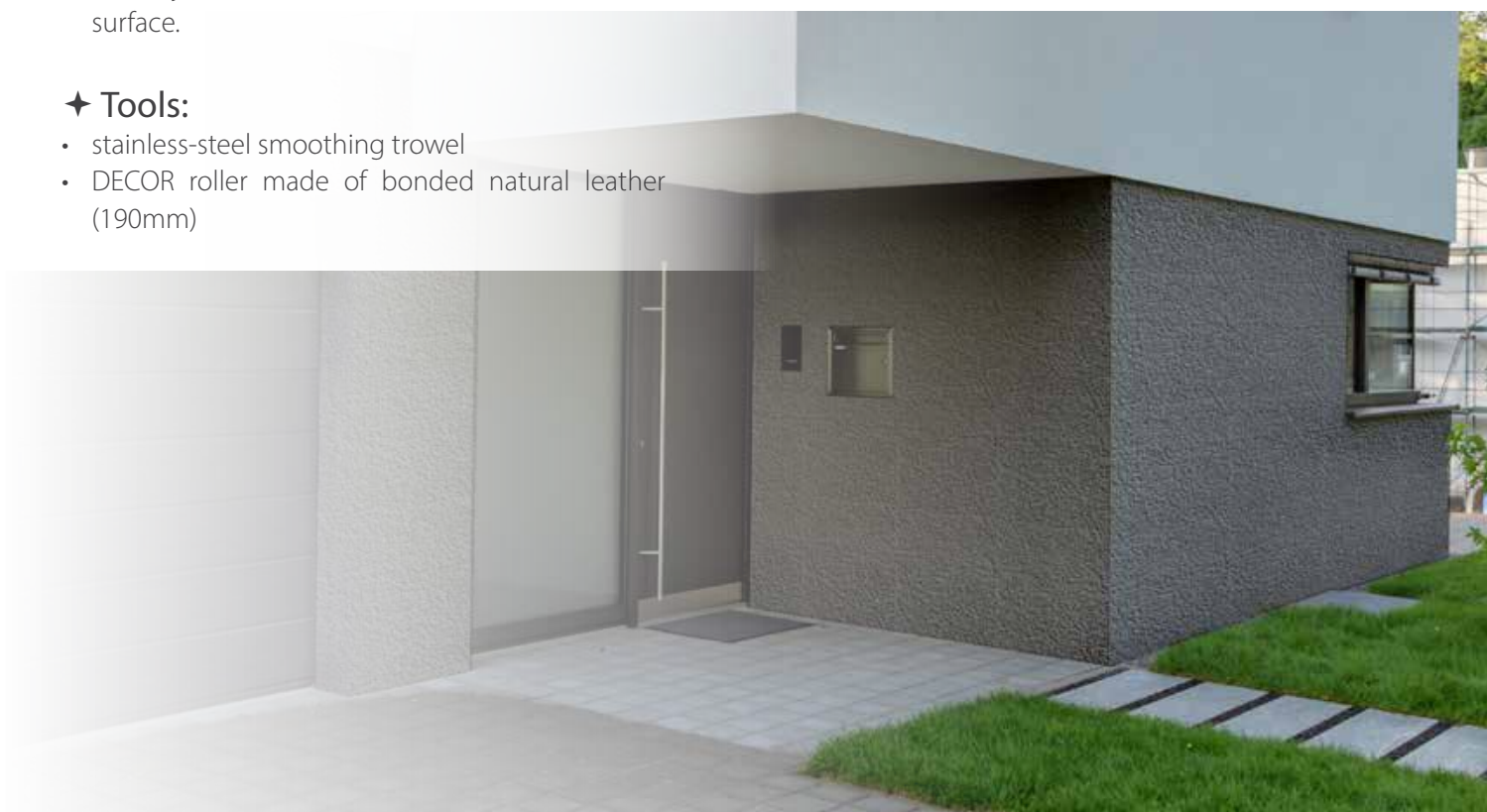
- Immediately after application, the substrate is treated with a decor roller.
- The roller should be well filled with render finish before use, to create an even, evident structure.

Finishing

- We roll vertically, horizontally, or diagonally.
- Always start at the extreme edges of the façade and adjust the direction based on the size of the surface.

✦ Tools:

- stainless-steel smoothing trowel
- DECOR roller made of bonded natural leather (190mm)



Calculation of material consumption for executing the technique:

Product	Consumption / m ²
JUBIZOL Decor volcano	6.4 kg/m ²

*One can select any colour shade from the range of possible shades according to JUB colour chart.



JUBIZOL Decor

SMOOTH

Smooth facade substrates

SMOOTH

Smooth facade substrates

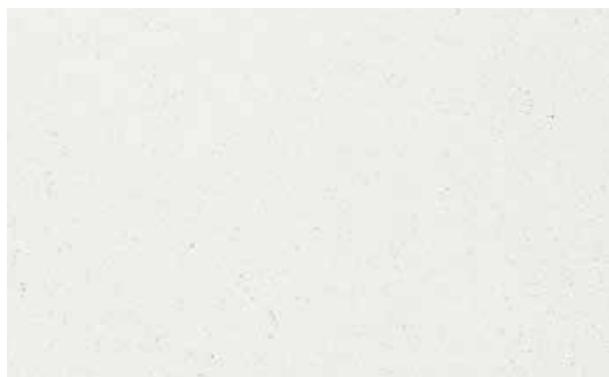
Smooth facades emphasize purity of lines and minimalism, which makes them popular in modern architecture. They allow for a subtle play of light and shadow and create elegant, uniform surfaces. They are used on buildings where we want to achieve a refined look. Due to their neutrality, they combine excellently with other materials such as glass, metal, or wood, providing durability and easy maintenance.



SMOOTH-1



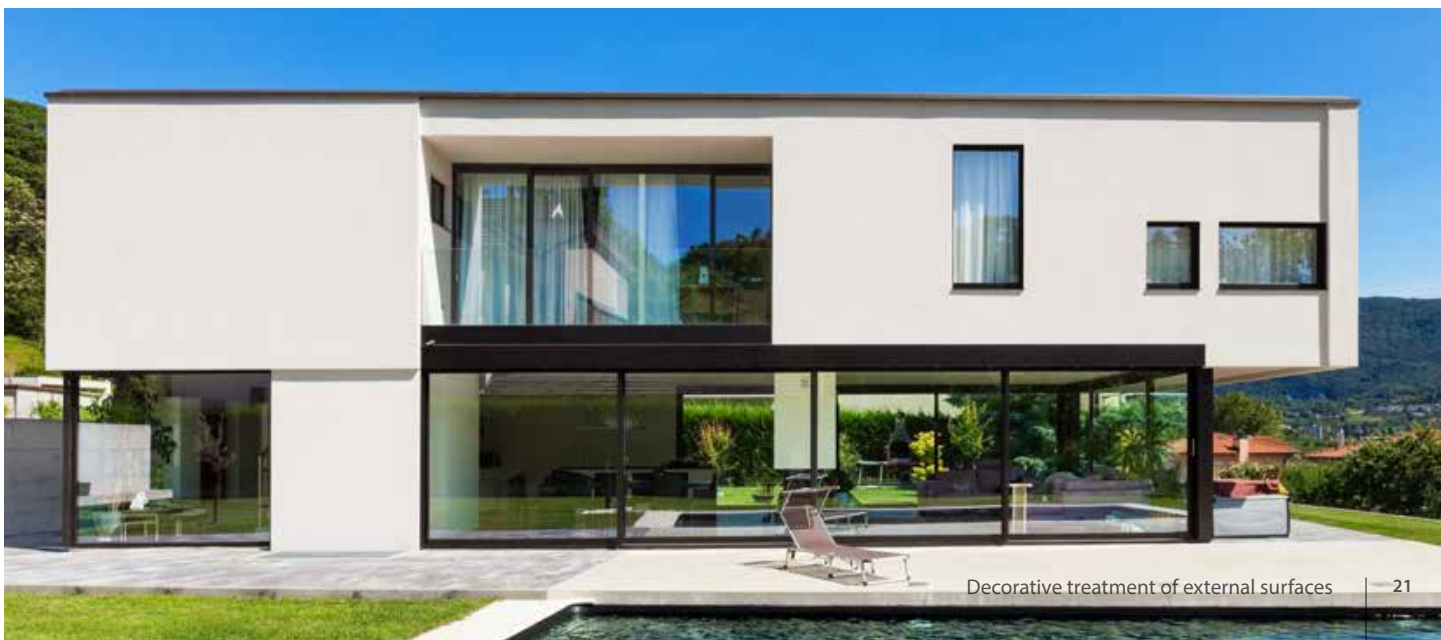
SMOOTH-3



SMOOTH-2



SMOOTH-4



SMOOTH – 1

Smooth, flat facade substrate
(2-coat application)

✦ Procedure:

Preparation

The base render finish (S1.0 / we recommend S1.5 mm) should be of a similar colour shade as the final finish.

Application

- Apply JUBIZOL Decor smooth in a thickness of ~1.0 mm.
- Drying time: 24 hours.
- Apply a second coat of JUBIZOL Decor smooth and immediately smooth the substrate as much as possible.

✦ Tools:

- stainless-steel smoothing trowel

Calculation of material consumption For executing the technique:

Product	Consumption
JUBIZOL Decor smooth	1.7 kg/m ² for 1 mm thickness

*Choose any colour shade from the range of possible shades according to JUB colour chart.

SMOOTH - 2

Brushed smooth facade substrate (2-coat application)

✦ Procedure:

Preparation

The base render finish (S1.0 / we recommend S1.5 mm) should be of a similar colour shade as the final finish.

Application

- Apply JUBIZOL Decor smooth in a thickness of ~1.0 mm.
- Drying time: 24 hours.
- Apply a second coat of JUBIZOL Decor smooth and immediately smooth the substrate as much as possible.

Structuring

- Machine sand the substrate.
- Use sandpaper P120–150, sanding in all directions to ensure the substrate is evenly smooth.

✦ Tools:

- stainless-steel smoothing trowel
- sander (we recommend: PLANEX LHS 225)
- sandpaper



Calculation of material consumption for executing the technique:

Product	Consumption
JUBIZOL Decor smooth	1.7 kg/m ² for 1 mm thickness

*For the technique implementation, any colour shade from the range of possible shades according to JUB colour chart can be chosen.

SMOOTH – 3

Sanded and painted smooth facade substrate (2-coat application)

✦ Procedure:

Preparation

The base finish render (S1.0 / we recommend S1.5 mm) should be of a similar colour shade as the final treatment.

Application

- Apply JUBIZOL Decor smooth in a thickness of ~1.0 mm.
- Drying time: 24 hours.
- Apply a second coat of JUBIZOL Decor smooth and immediately smooth the substrate as much as possible.

Structuring

- Machine sand the substrate.
- Use sandpaper P120–150, sand in all directions to achieve an evenly smooth surface.

Finishing

- Thoroughly dust off.
- 2 x painting with the desired JUB facade paint.

✦ Tools:

- stainless-steel smoothing trowel
- sander (we recommend: PLANEX LHS 225)
- sandpaper
- JUB facade roller 250

Calculation of material consumption for implementation of the technique:

Product	Consumption / m ²
JUBIZOL Decor smooth	1.7 kg/m ² for 1 mm thickness
JUB facade paint	180-210 ml for two-coat application

*For implementation of the technique, we can choose any colour shade from the range of possible shades according to JUB colour chart.

SMOOTH – 4

Sanded and painted metallic smooth facade substrate (2-coat application)

✦ Procedure:

Preparation

The base render finish (S1.0 / we recommend S1.5 mm) should be of a similar colour shade as the final finish.

Application

- Apply JUBIZOL Decor smooth in a thickness of ~1.0 mm.
- Drying time: 24 hours.
- Apply a second coat of JUBIZOL Decor smooth and immediately smooth the substrate as much as possible.

Structuring

- Machine sand the substrate.
- Use sandpaper P120–150, sanding in all directions for an even smooth surface.

Finishing

- Thoroughly dust off.
- 2 x painting with DECOR Acrylcolor gold / silver / bronze (must be appropriately undercoated) (recommended ratio > gold : silver = 1 : 1) undercoat with ACRYLCOLOR 300C before application.

Note:

Undercoat DECOR Acrylcolor with:

Gold > TRENDCOLOR 240B (FF) / 535B (HC)

Silver > ACRYLCOLOR 050E (FF) / 125E (HC)

Bronze > TRENDCOLOR 380B (FF) / 405C (HC)

✦ Tools:

- stainless-steel smoothing trowel
- sander (we recommend: PLANEX LHS 225)
- sandpaper
- JUB facade roller 250

Calculation of material consumption For executing the technique:

Product	Consumption / m ²
JUBIZOL Decor smooth	1.7 kg/m ² for 1 mm thickness
DECOR Acrylcolor	180-210 ml for a 2-coat application

*For executing the technique, we can choose any colour shade from the range of possible shades according to JUB colour chart.

**FF - Favourite Feelings colour chart / HC - Home of Colours colour chart



JUBIZOL Decor

CONCRETE

Concrete appearance of facade substrate

CONCRETE

Concrete look of facade surface

Facades with a concrete look bring a raw, industrial character and timeless aesthetics. Their texture can range from completely smooth to subtly structured, allowing for different visual effects. Such treatment emphasizes minimalism, purity of forms, and architectural expressiveness. In addition to aesthetic value, it also provides high resistance to weather conditions and easy maintenance, making it a popular choice in modern facade design.



CONCRETE - 1



CONCRETE - 5



CONCRETE - 2



CONCRETE - 6



CONCRETE - 3



CONCRETE - 7



CONCRETE - 4



CONCRETE - 8

CONCRETE - 1

Smooth concrete boards without visible surface deformations, separated by grooves (1-coat application in 2 colour shades)

✦ Process:

Preparation

The base render finish (S1.0 / S1.5 mm) should be of a similar colour shade to the final treatment.

Application

- JUBIZOL Decor Smooth is applied in two colour shades (for example: 050C (FF) and 050E (FF)) up to a thickness of 2.0 mm.
- The shades are alternately applied with a steel smoothing trowel in patches with a diameter of 10–20 cm, each covering approximately 50 % of the substrate.
- Immediately after application, the substrate is levelled and smoothed with a steel smoothing trowel.

Structuring

- Ensure soft colour transitions without sharp boundaries.

Finishing

- Once the compound hardens (~ 24h), grooves are cut out with a screwdriver of 6–8 mm of width.
- The grooves reveal the coarse substrate, highlighting the surface structure.

✦ Tools:

- stainless-steel smoothing trowel
- screwdriver of a width of 6 to 10 mm

Calculation of material consumption for executing the technique:

Product	Consumption / m ²
JUBIZOL Decor smooth	1.7 kg/m ² for 1 mm of thickness

*For executing the technique, we can choose any colour shade from the range of possible shades according to JUB colour chart.

**FF - Favourite Feelings colour chart / HC - Home of Colours colour chart
050C and 050E (FF) can be substituted with 125C and 125E (HC).

CONCRETE - 2

Smooth concrete surface with
5 % of surface deformations (1-coat
application in 2 colour shades)

✦ Procedure:

Preparation

The base render finish (S1.0 / S1.5 mm) should be of a similar colour shade to the final treatment.

Application

- Apply JUBIZOL Decor Smooth in two shades (for example: 050C (FF) and 050E (FF)) up to a thickness of 2.0 mm.
- Alternate the shades using a steel trowel in patches of 10–20 cm in diameter, each covering approximately half of the surface.
- Approximately 5% of the surface of render finish is not covered with JUBIZOL Decor smooth (appearance of defects in the concrete)

✦ Tools:

- stainless-steel smoothing trowel

Calculation of material consumption for executing the technique:

Product	Consumption / m ²
JUBIZOL Decor smooth	1.7 kg/m ² for 1 mm of thickness

*For executing the technique, we can choose any colour shade from the range of possible shades according to JUB colour chart.

CONCRETE – 3

Smooth sanded concrete surface
with 5 % of deeper surface
deformations (2-coat application)

✦ Process:

Preparation

The base render finish (S1.0 / S1.5 mm) should be darker in shade than the final finish.

Application

- The first coat (darker colour shade): Apply JUBIZOL Decor smooth in a thickness of ~1.0 mm. The compound is levelled immediately, while approximately 5 % of the surface of the base render finish is left uncovered (appearance of defects in concrete). Drying time: 24 hours.
- The second coat (lighter colour shade): Apply the second coat and level it immediately. Approximately 5% of the surface of the based render finish should not be covered. Ensure that these areas roughly align with the areas that were left uncovered in the first coat. Drying time: 24 hours.

Finishing

- Machine sand the surface.
- Use sandpaper P120–150, sanding in all directions to ensure the surface is evenly smooth. Repeat sanding with a smaller tool (P-150).
- After sanding, dust off the substrate.

✦ Tools:

- stainless-steel smoothing trowel
- sander (we recommend: PLANEX LHS 225)
- rounded steel smoothing trowel

Calculation of material consumption for executing the technique:

Product	Consumption / m ²
JUBIZOL Decor smooth	1.7 kg/m ² for 1 mm of thickness

*For executing the technique, we can choose any colour shade from the range of possible shades according to JUB colour chart.

CONCRETE - 4

Smooth sanded concrete surface
with 5 % of surface deformations
(1-coat application)

✦ Procedure:

Preparation

The base render finish (S1.0 / S1.5 mm) should be of a similar colour shade as the final finish.

Application

- Apply JUBIZOL Decor smooth in a thickness of up to 2.0 mm. Immediately level the substrate, remove excess material.

Structuring

- With a decorative brush or roller, randomly take away material on approximately 5% of the surface.
- Drying time: 24 hours.

Finishing

- Machine sand the surface.
- Use sanding paper P120–150, sand in all directions for an evenly smooth surface.
- Repeat sanding with a smaller tool (P-150).
- After sanding, dust off the surface.

✦ Tools:

- stainless-steel float
- sander (we recommend: PLANEX LHS 225)

Calculation of material consumption for executing the technique:

Product	Consumption / m ²
JUBIZOL Decor smooth	1.7 kg/m ² for 1 mm thickness

For executing the technique, we can choose any colour shade from the range of possible shades according to JUB colour chart.

CONCRETE – 5

Smooth sanded concrete surface with no visible surface deformations (2-coat application)

✦ Procedure:

Preparation

The base render finish (S1.0 / we recommend S1.5 mm) should be of a similar colour shade as the final finish.

Application

- The first coat: JUBIZOL Decor smooth at a thickness of ~1.0 mm. Level the surface immediately after application, remove excess material. Drying time 24 hours.
- The second coat: JUBIZOL Decor smooth at a thickness of ~1.0 mm. level as much as possible immediately, remove excess material. Drying time 24 hours.

Finishing

- Machine sand the surface.
- Use sandpaper P120–150, sand in all directions to achieve an evenly smooth surface. Repeat sanding with smaller tools (P-150).
- After sanding, dust off the surface.

✦ Tools:

- stainless-steel smoothing trowel
- sander (we recommend: PLANEX LHS 225)

Calculation of material consumption for executing the technique:

Product	Consumption / m ²
JUBIZOL Decor smooth	1.7 kg/m ² for 1 mm of thickness

*For executing the technique, we can choose any colour shade from the range of possible shades according to JUB colour chart.



CONCRETE – 6

Coarse, untreated concrete surface with a stepped appearance (1-coat application)

✦ Procedure:

Preparation

The base render finish (S1.0 / we recommend S1.5mm) should be of a similar colour shade as the final finish.

Application

- Apply JUBIZOL Decor smooth in a thickness of 1-2mm.
- The render finish is applied so that the trowel bounces off the grains of the underlying render finish.
- Do not smooth the render finish; instead, distribute it evenly.

Structuring

- Approximately 5 % of the surface of the underlying render finish should remain partially uncovered to create a stepped, coarse appearance.
- In certain areas, the structure of the underlying render finish should be visible.

✦ Tool:

- stainless-steel smoothing trowel



Calculation of material consumption for executing the technique:

Product	Consumption / m ²
JUBIZOL Decor smooth	1.7 kg/m ² for 1 mm thickness

*For executing the technique, we can choose any colour shade from the range of possible shades according to JUB colour chart.

CONCRETE – 7

Concrete surface with visible imprints of raw formwork boards (1-coat application)

✦ Process:

Preparation

The base render finish (S1.0 / S1.5 mm) should be of a similar colour shade as the final treatment.

Application

- The first coat of JUBIZOL Decor smooth is applied in a thickness of ~1.0 mm and immediately levelled as much as possible; excess material is removed. Drying time is 24 hours.
- The second coat is applied in a thickness of ~1.0 mm and levelled as much as possible immediately; excess material is removed.

Structuring

- With decorative tools (wood grain tampon effect) we press an imitation of wood grain into the fresh render finish.
- The wood patterns can be shaped vertically, horizontally, or diagonally, depending on the building.

✦ Tools:

- stainless-steel smoothing trowel
- tool - wood grain tampon effect

Calculation of material consumption for executing the technique:

Product	Consumption / m ²
JUBIZOL Decor smooth	1.7 kg/m ² for 1 mm of thickness

*For executing the technique, we can choose any colour shade from the range of possible shades according to JUB colour chart.

CONCRETE – 8

Smoothed concrete surface with visible traces of formwork panels.
(1-coat application)

✦ Process:

Preparation

The base render finish (S1.0 / S1.5 mm) should be of a similar colour shade to the final treatment.

Application

- JUBIZOL decor smooth is applied in a thickness of approximately 2.0 mm and is immediately levelled as much as possible, removing excess material. Drying time is 24 hours.

Structuring

- Using a flat aluminium batten as a guide and a metal holder for the painting roller (without the roller) with a diameter of 6-8 mm, draw grooves into the fresh render finish.
- Imprint the rounded back side of the painting roller handle into the corners for additional structure.

Finishing (if desired)

- Create a slightly mottled final surface.
- Apply DECOR Antique (tinted) unevenly with a roller and then immediately wipe with a sponge.

✦ Tools:

- stainless-steel smoothing trowel
- aluminium batten
- metal holder for painting roller
- optionally: roller + sponge

Calculation of material consumption for technique execution:







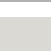
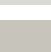

Product	Consumption / m ²
JUBIZOL Decor smooth	1.7 kg/m ² for 1 mm of thickness
DECOR Antique (tinted)	100 ml/m ² for the first coat and 60 ml/m ² for each subsequent coat

*For technique execution, we can choose any colour shade from the range of possible shades according to JUB colour chart.



We recommend combinations of shades according to JUB colour chart FF / HC:

JUBIZOL Decor smooth

020F (FF/HC)	
020E (FF/HC)	
020D (FF/HC)	
040F (FF) / 035F (HC)	
040E (FF) / 045E (HC)	
040D (FF) / 045D (HC)	
050E (FF) / 125E (HC)	
050D (FF) / 125D (HC)	
050C (FF) / 125C (HC)	

*FF - Favourite Feelings colour chart / HC - Home of Colours colour chart.

LINES

Linearly structured facade surface

Various processing techniques, such as lines, grooves, stripes, and tracks, allow for the creation of unique visual effects on the facade. From subtle textures to pronounced reliefs – these elements change the appearance of the building depending on the light and the observer's perspective. With modern materials and application methods, we can achieve both minimalist and dynamic structures that emphasize the architectural style and complement the overall image of the object.



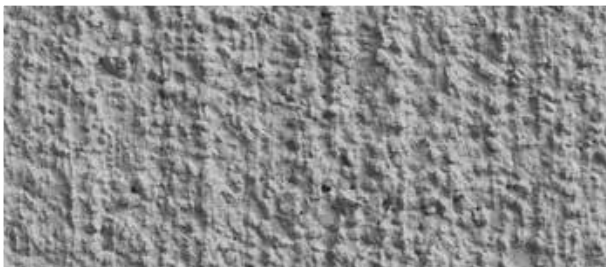
LINES - 1



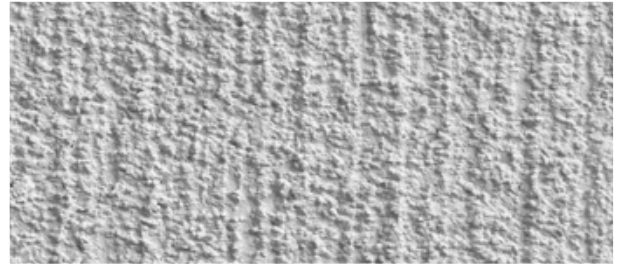
LINES - 2



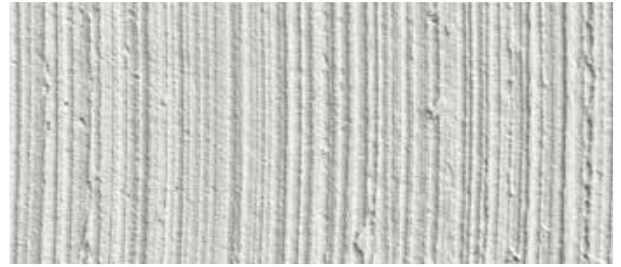
LINES - 3



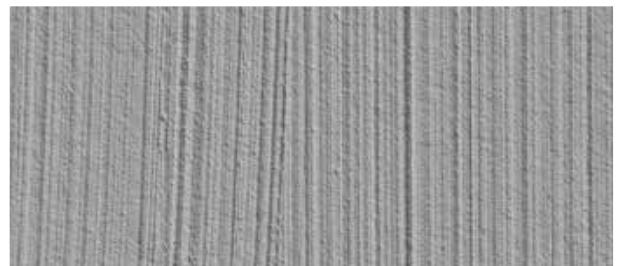
LINES - 4



LINES - 5



LINES - 6



LINES - 7



LINES - 8



LINES - 9



JUBIZOL Decor

LINES

Linearly structured façade

LINES - 1

Very deep, evenly spaced grooves

✦ Procedure:

Preparation

- The base render finish (S1.0 / S1.5 mm) should be of a similar colour shade as the final treatment.
- Divide the surfaces into smaller sections, it is recommended to delineate with strips.

Application

- Apply the first coat of JUBIZOL Decor art in a thickness of ~1.0 mm and immediately level it as much as possible, removing excess material. Drying time is 24 hours.
- The second coat is applied with a notched trowel in a thickness of ~3.0-4.0 mm and immediately levelled as much as possible ("butterfly" or "pilot"), remove excess material.
- Final thickness: 5-6 mm.

Structuring

- The grooves are made with a steel tool (trowel: 30 cm, notches 8-10 mm).
- For the starting line, use an aluminium batten as a guide and continue the pattern with previous grooves.

Note: This technique is suitable for smaller surfaces. On larger continuous surfaces, it is difficult to achieve a seamless and even lines.

✦ Tools:

- stainless-steel smoothing trowel
- aluminium batten
- stainless-steel notched trowel with notches width 8-10 mm

Calculation of material consumption For executing the technique:

Product	Consumption / m ²
JUBIZOL Decor art	1.5 kg/m ² for 1 mm thickness

*For executing the technique, we can choose any colour shade from the range of possible shades according to JUB colour chart.

LINES – 2

Medium deep, evenly spaced grooves

✦ Procedure:

Preparation

- The base render finish (S1.0 / S1.5 mm) should be of a similar colour shade as the final treatment.
- Divide the surfaces into smaller sections, it is recommended to mark them with strips.

Application

- Apply the first coat of JUBIZOL Decor art in a thickness of ~1.0 mm and immediately level it as much as possible, remove excess material. Drying time is 24 hours.
- The second coat is applied with a notched trowel in a thickness of ~3.0-4.0 mm and immediately levelled as much as possible ("butterfly" or „pilot“), remove excess material.
- Final thickness: 4–5 mm.

Structuring

- The grooves are made with a steel tool (trowel: 30 cm, notches 5–6 mm).
- For the starting line, use an aluminium batten as a guide and continue the pattern with previous grooves.

Note: This technique is suitable for smaller surfaces. On larger continuous surfaces, it is difficult to achieve a seamless and even lines.

✦ Tools:

- stainless-steel smoothing trowel
- aluminium batten
- stainless-steel notched smoothing trowel with notches width 5-6 mm



Calculation of material consumption For executing the technique:

Product	Consumption / m ²
JUBIZOL Decor art	1.5 kg/m ² for 1 mm of thickness

*For executing the technique, we can choose any colour shade from the range of possible shades according to JUB colour chart.

LINES - 3

Fine, evenly distributed grooves

✦ Procedure:

Preparation

- The base render finish (S1.0 / S1.5 mm) should be of a similar colour shade as the final finish.
- Divide the surfaces into smaller sections, it is recommended to mark them with strips.

Application

- Apply the first coat of JUBIZOL Decor art in a thickness of ~1.0 mm and immediately level it as much as possible, removing the excess material. Drying time 24 hours.
- Apply the second coat with a notched smoothing trowel with a thickness of ~2.0-3.0 mm and immediately level it as much as possible ("butterfly" or "pilot"), remove excess material.
- Final thickness: 3-4 mm.

Structuring

- Create grooves with steel tools (trowel: 30 cm, notches 3-4 mm).
- Use an aluminium batten as a guide for the starting line and continue the pattern with the previous grooves.

Note: This technique is suitable for smaller surfaces. On larger uninterrupted surfaces, matching and achieving even lines is difficult to perform.

✦ Tools:

- stainless-steel smoothing trowel
- aluminium batten
- stainless notched trowel with notches width 3-4 mm

Calculation of material consumption For executing the technique:

Product	Consumption / m ²
JUBIZOL Decor art	1.5 kg/m ² for 1 mm of thickness

*For executing the technique, we can choose any colour shade from the range of possible shades according to JUB colour chart.

LINES - 4

Very rough linearly brushed lines

✦ Procedure:

Preparation

JUBIZOL Unigrund should be of a similar colour shade as the final finish.

Application

- The final render finish is applied with a stainless-steel smoothing trowel in a thickness a little above the diameter of the thickest grain.
- Level it after application.

Structuring

- With a decorative brush (road broom 40–50 cm, hard bristles), grooves are created from top to bottom.
- Excess material is removed continuously; the grooves should not be too deep.

Finishing

- Few minutes after smoothing, the mortar lumps are lightly pressed with a clean stainless-steel smoothing trowel.

✦ Tools:

- stainless-steel smoothing trowel
- road broom

Calculation of material consumption for executing the technique:

JUBIZOL smooth decorative render finish	Consumption / m ²
S 2,5	5.0 kg/m ²

*For executing the technique, we can choose any colour shade from the range of possible shades according to JUB colour chart.



LINES – 5

Medium coarse linearly brushed lines

✦ Procedure:

Preparation

JUBIZOL Unigrund should be of a similar colour shade as the final finish.

Application

- Apply the final render finish in a thickness slightly above the diameter of the thickest grain.
- Level it after application.

Structuring

- Using a decorative brush (road broom 40–50 cm, hard bristles), we create grooves from the top down.
- Excess material is removed continuously; the grooves should not be too deep.

Finishing

- Few minutes after smoothing, the mortar lumps are lightly pressed with a clean stainless-steel smoothing trowel.

✦ Tools:

- stainless-steel smoothing trowel
- road broom

Calculation of material consumption for executing the technique:

JUBIZOL smooth decorative render finish	Consumption / m ²
S 1.5	2.5 kg/m ²

* For executing the technique, we can choose any colour shade from the range of possible shades according to JUB colour chart.

LINES – 6

Fine, linearly brushed lines

✦ Procedure:

Preparation

The base render finish (S1.0 / S1.5 mm) should be of a similar colour shade as the final finish.

Application

- The first coat of JUBIZOL Decor smooth is applied in a thickness of ~1.0 mm and is immediately levelled as much as possible, removing excess material. Drying time is 24 hours.
- The second coat is applied with a notched smoothing trowel in a thickness of ~1.0-2.0 mm and is immediately levelled as much as possible ("butterfly" or "pilot"), excess material is removed.

Structuring

- With a decorative brush (road broom 40–50 cm, hard bristles), grooves are created from top to bottom.
- Excess material is continuously removed; the grooves should not be too deep.

✦ Tools:

- stainless-steel smoothing trowel
- road broom

Calculation of material consumption for executing the technique:

Product	Consumption / m ²
JUBIZOL Decor smooth	1.7 kg/m ² for 1 mm of thickness

*For executing the technique, we can choose any colour shade from the range of possible shades according to JUB colour chart.

LINES – 7

Very gentle, linearly brushed lines

✦ Procedure:

Preparation

The base render finish (S1.0 / S1.5 mm) should be of a similar colour shade as the final treatment.

Application

- Apply the first coat of JUBIZOL Decor smooth in a thickness of ~1.0 mm and immediately level it as much as possible, removing any excess material. Drying time is 24 hours.
- Apply the second coat with a notched smoothing trowel in a thickness of ~1.0-2.0 mm and immediately level it as much as possible ("butterfly" or "pilot"), remove any excess material.

Structuring

- Create grooves from top to bottom using a decorative brush (decorative brush 220 x 20 mm).
- Continuously remove excess material; the grooves should not be too deep.

✦ Tools:

- stainless-steel smoothing trowel
- decorative brush 220 x 20 mm

Calculation of material consumption for executing the technique:

Product	Consumption / m ²
JUBIZOL Decor smooth	1.7 kg/m ² for 1 mm of thickness

*For executing the technique, we can choose any colour shade from the range of possible shades according to JUB colour chart.

LINES - 8

Very deep, evenly distributed grooves

✦ Procedure:

Preparation

- The base render finish (S1.0 / S1.5 mm) should be of a similar colour shade as the final finish.
- For large projects, we recommend dividing the surface.

Application

- JUBIZOL Decor art is applied with a notched smoothing trowel (8 × 10 mm) at a 45° angle.
- The render finish is levelled with a wider smoothing trowel ("butterfly" or "pilot").
- Thickness of application: 4–5 mm.

Structuring

- The grooves are made with a metal comb (30 cm, notches 4x18 mm).
- The starting line is shaped with an aluminium batten, the pattern continues along the last three grooves.

✦ Tools:

- stainless-steel smoothing trowel
- aluminium batten
- metal comb (width 30 cm, teeth 4x80 mm)

Calculation of material consumption for executing the technique:

Product	Consumption / m ²
JUBIZOL Decor art	1.5 kg/m ² for 1 mm thickness

*For executing the technique, we can choose any colour shade from the range of possible shades according to JUB colour chart.

LINES - 9

Uneven grooves running in the same direction

✦ Procedure:

Preparation

JUBIZOL Unigrund should be of a similar colour shade as the final finish.

Application

- The first coat of JUBIZOL Decor art is applied in a thickness of ~1.0 mm and is immediately levelled as much as possible, excess material is removed. Drying time is 24 hours.
- The second coat is applied in a thickness of ~2.0-3.0 mm and is immediately levelled as much as possible, excess material is removed.

Structuring

- Immediately cut grooves into the surface with a decorative brush (artificial grass).
- With a steel smoothing trowel, slightly level only the peaks so that we achieve approximately 50% flat smooth surfaces and approximately 50% recessed grooves.
- Drying time: 1 day for each mm of thickness.

Finishing (if you want)

- The render finish is painted twice with JUB facade paint, which is of a different colour shade.
- The paint is applied only on larger flat surfaces using a foam or velour roller.
- Grooves and deeper areas of the render finish should remain in their original shade – the paint should not enter them.

✦ Tools:

- stainless-steel smoothing trowel
- JUB facade roller 250
- foam or velour roller
- decorative brush - artificial grass

Calculation of material consumption for technique execution:

JUBIZOL trowelled decorative render finish	Consumption / m ²
JUBIZOL Decor art	1.5 kg/m ² for 1 mm thickness

*For executing the technique, we can choose any colour shade from the range of possible shades according to JUB colour chart.



JUBIZOL Decor

IMITATION

Imitations and stencils on facade surface

IMITATION

Imitations and stencils on facade surface

Modern techniques allow for complete imitation of brick, stone, and wood, combining the aesthetics of natural materials with durability and minimal maintenance. By using stencils and design matrices, facades acquire unique textures, patterns, and relief motifs that create a distinctive architectural expression. The warmth of brick, the robustness of stone, or the softness of wood thus become accessible without the limitations of traditional materials, and the facade becomes a canvas for creativity and the building's identity. Decorative solutions for buildings where additional weight is not possible due to static constraints.



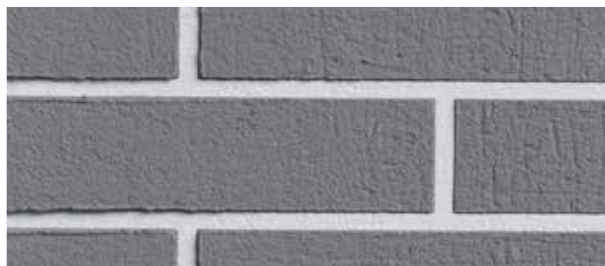
WOOD



PANEL STONE



BRICK - 1



BRICK - 2



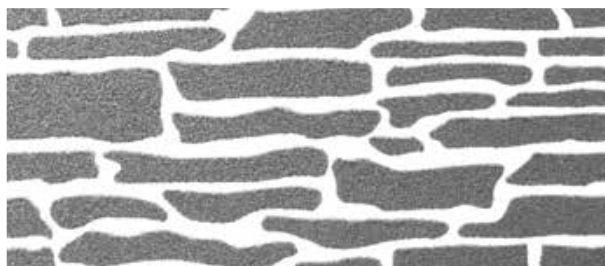
TRAVERTIN



STENCIL - 1



STENCIL - 2



STONE WALL

PANEL STONE

Imitation of stone panels

✦ Procedure:

Preparation

Base render finish (S1.0 / S1.5 mm)

Application

- JUBIZOL Decor art is applied in a thickness of 3-5 mm.
- Start imprinting the stencils immediately after application.

Structuring

- A rubber stencil is imprinted into the compound and smoothed with a rubber roller to create a stone relief.
- The stencil is removed by twisting, and after each imprinting, it is cleaned with a brush and water.
- Imprinting can be done vertically, horizontally, or at an angle.
- Drying time: 1 day for each mm of thickness.

Finishing (1st or 2nd option)

1. Spotted appearance that adds depth

- Apply DECOR Antique (colour shade of choice) with a sponge in the direction of the relief, leaving more coating in the recesses and gently wiping the protrusions for a natural spotted appearance.
- For greater contrast, we execute several coats

2. Artistic - realistic stone appearance

- Apply 1x DECOR Acrylcolor (tinted) and 2 shades of JUB facade paint.
- Apply with a roller to random spots (they can overlap) and blend transitions with a sponge (during or immediately after application).
- Leave more paint in the recesses and gently wipe it from the protrusions.

✦ Tools:

- stainless-steel smoothing trowel
- aluminium batten
- stencil for stone - JUBIZOL matrix panel stone
- sponge for tiles
- foam or velvet roller

Calculation of material consumption for technique execution:

Product	consumption
JUBIZOL Decor art	1.5 kg/m ² for 1 mm of thickness
DECOR Antique	100 ml/m ² for the first coat and 60 ml/m ² for each subsequent coat
JUB façade paint	180 - 210 ml for a 2-coat application

Selected combinations of colour shade according to JUB colour chart for the 2nd option

JUBIZOL Decor art	DECOR Acrylcolor	JUB façade paint, colour shade 1	JUB facade paint, colour shade 2
050C (FF) 125C (HC)	SILVER	050A (FF) 125A (HC)	050B (FF) 125B (HC)
N04F	BRONZE	050E (FF) 125E (HC)	050F (FF) 125F (HC)
WHITE	SILVER	020F (FF) 020F (HC)	050E (FF) 125E (HC)
020F (FF) 020F (HC)	SILVER	050F (FF) 125F (HC)	050D (FF) 125D (HC)

*FF - Favourite Feelings colour chart / HC - Home of Colours colour chart.

BRICK – 1

Brick imitation

✦ Procedure:

Preparation

- Base render finish (S1.0 mm) coloured in the desired shade of grout.

Application

- Place a self-adhesive stencil for the brick wall on the surface.
- Apply JUBIZOL decorative render finish (S1.5 mm) in a thickness of 10% above the grain diameter.









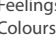



Structuring

- The surface is levelled, not trowelled.
- Immediately after levelling the material, remove the stencils – always from top to bottom.

✦ Tools:

- stainless-steel smoothing trowel
- aluminium batten
- JUBIZOL stencil for brick pattern

Selected colour shade combinations according to JUB colour chart:

JUBIZOL Finish S 1.0 mm		JUBIZOL Trend finish / Aerogel S 1.5 mm	
Joint colour shade		Brick colour shade	
050E (FF)		385B (FF)	
125E (HC)		385B (HC)	
050F (FF)		780B (FF)	
125F (HC)		385C (HC)	
020D (FF)		790B (FF)	
020D (HC)		365C (HC)	

*FF - Favourite Feelings colour chart
HC - Home of Colours colour chart.

Calculation of material consumption for executing the technique:

Product	Consumption
JUBIZOL Trend finish S 1.5 mm	2.5 kg/m ²
JUBIZOL Aerogel finish S 1.5 mm	2.3 kg/m ²

**For executing the technique, we can choose any colour shade from the range of possible shades according to JUB colour chart.

***Execution is also possible with all other JUBIZOL decorative render finishes.



BRICK - 2

Brick imitation

✦ Procedure:

Preparation

Base cement render finish (JUBIZOL Premium Fix) is tinted in the desired colour shade of the grout (2x applications of REVITALCOLOR).

Application

- Place a self-adhesive stencil for the brick wall on the surface.
- Apply JUBIZOL Decor art in a thickness of ~2.0 mm.







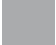


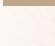
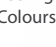
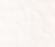
Structuring

- The surface is levelled, not trowelled.
- Slightly structure the brick with a roller: DECOR natural leather roller (200mm) (instead, we can also use the DECOR plywood natural leather roller (190mm) or a Decoration tampon).
- Immediately after levelling the material, remove the stencils - always from top to bottom.

✦ Tools:

- stainless-steel smoothing trowel
- JUB facade roller 250
- aluminium batten
- JUBIZOL Template for brick pattern
- DECOR natural leather roller (200 mm)

Selected colour combinations according to JUB colour chart:

REVITALCOLOR		JUBIZOL Decor art	
Joint colour shade		Brick colour shade	
050E (FF)		385C (FF)	
125E (HC)		385C (HC)	
040G (FF)		040C (FF)	
020G (HC)		005C (HC)	
020D (FF)		320C (FF)	
020D (HC)		435C (HC)	

*FF - Favourite Feelings colour chart

HC - Home of Colours colour chart.

Calculation of material consumption for executing the technique:

Product	Consumption
JUBIZOL Decor art	1.5 kg/m ² for 1 mm of thickness
REVITALCOLOR	~350 ml/m ² for a 2-coat application

**For executing the technique, we can choose any colour shade from the range of possible shades according to JUB colour chart.

TRAVERTIN

Travertin imitation

✦ Procedure:

Application

- Base render finish (S1.0 / S1.5 mm) should be of a similar colour shade as the final finish.

Application

- JUBIZOL Decor art is applied in a thickness of 1–2 mm.
- The surface is levelled as much as possible, and we immediately proceed to structuring.

Structuring

- With a decorative brush, imprint a perforated stencil onto the surface at a right angle in wavy transitions.
- The structure should cover up to 1/3 of the surface, density as desired.

Creating block pattern

- On almost dry but still soft surface, we cut in the pattern of stone blocks (e.g. 20x40 cm).
- We use a levelling batten and appropriate tools (e.g. metal roller holder).
- After drying, we deepen and fix the cuts with sandpaper (P100–P150).
- The surface is machine sanded. We use sandpaper P120–150, sanding in all directions to ensure the surface is uniformly smooth.

Finishing

- Apply 2x DECOR Antique in circular motions with a glove, erase traces. A sponge for tiles can also be used.
- Drying time: between applications 6 hours, after the second application 24 hours.

Note: if we opt for a more relief and thick-layered implementation, use JUBIZOL Decor art.














✦ Tools:

- stainless-steel smoothing trowel
- aluminium batten
- screwdriver
- sandpaper
- decorative brush 15 x 15 cm
- sponge for tiles or decorative glove
- rounded smoothing trowel
- sander (we recommend: PLANEX LHS 225)

Calculation of material consumption for executing the technique:

Product	Consumption
JUBIZOL Decor art	1.5 kg/m ² for 1 mm of thickness
DECOR Antique	100 ml/m ² for the first coat and 60 ml/m ² for each subsequent coat

Selected combinations of colour shades according to JUB colour chart

JUBIZOL Decor art		DECOR Antique	
310D (FF)		320C (FF)	
465C (HC)		435C (HC)	
050E (FF)		050D (FF)	
125E (HC)		125D (HC)	
160F (FF)		160E (FF)	
155F (HC)		215F (HC)	
170F (FF)		170E (FF)	
105F (HC)		105E (HC)	
050D (FF)			
125D (HC)			
050C (FF)			
125C (HC)			
300E (FF)			
465E (HC)			
160E (FF)			
215F (HC)			
160D (FF)			
215E (HC)			

*FF - Favourite Feelings colour chart
HC - Home of Colours colour chart.



STENCIL – 1

Stencil with a chosen motif
(1-coat application)

✦ Procedure:

Preparation

Base render finish JUBIZOL Finish 1.0 mm (tinted) smoothed with a clean stainless-steel smoothing trowel.

Application

- Stick the stencil to a completely dry finishing coat.
- JUBIZOL Decor smooth in a different colour shade is applied over the stencil in a thickness of 1-2 mm.

Structuring

- The surface is levelled, not trowelled.
- Immediately after levelling the material, remove the stencils – always from top to bottom.

Note: For depicting characters, symbols, or shapes, we can also use self-adhesive protective tape instead of a stencil.

✦ Tools:

- stainless-steel smoothing trowel
- stencil of choice

Calculation of material consumption for executing the technique:

Product	Consumption
JUBIZOL Decor smooth	1.7 kg/m ² for 1 mm of thickness

*For executing the technique, we can choose any colour shade from the available shades according to JUB colour chart.

STENCIL 2

Stencil with a chosen motif
(2-coat application)

✦ Procedure:

Preparation

Base render finish (S1.0 / S1.5 mm) smoothed with clean stainless-steel smoothing trowel.

Application

- Apply JUBIZOL Decor smooth (tinted) in a thickness of ~ 1.0 mm and level the surface.
- Drying time: 24 hours.

Structuring

- Place the self-adhesive stencil to a completely dry coat.
- Apply a second coat of JUBIZOL Decor Smooth (in a different colour shade) over the stencil.
- Remove the stencils immediately after the application.

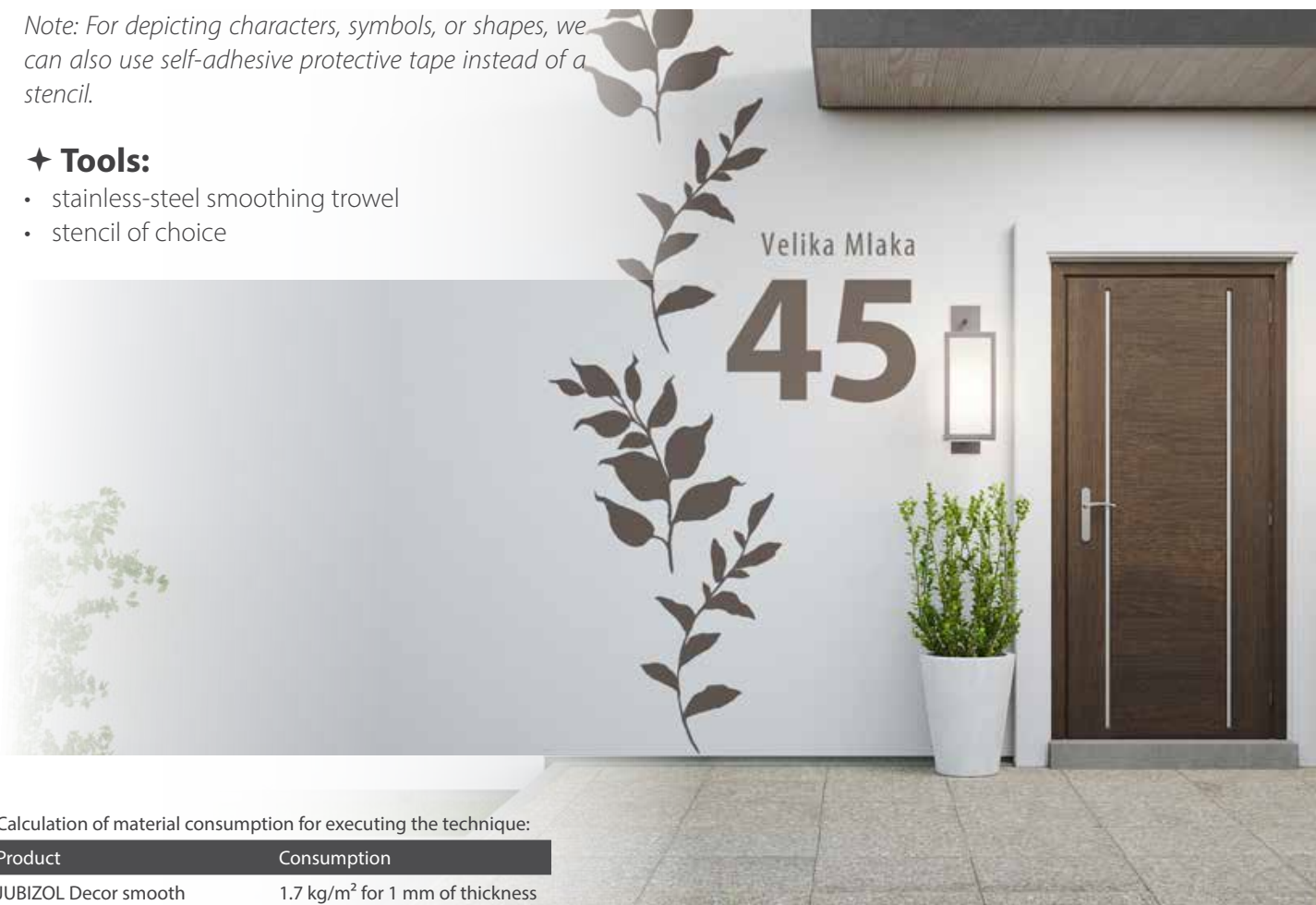
Finishing

- If desired, we can lightly sand each layer when dry (sandpaper P-80–120).

Note: For depicting characters, symbols, or shapes, we can also use self-adhesive protective tape instead of a stencil.

✦ Tools:

- stainless-steel smoothing trowel
- stencil of choice



Calculation of material consumption for executing the technique:

Product	Consumption
JUBIZOL Decor smooth	1.7 kg/m ² for 1 mm of thickness

STONE WALL

Stone wall imitation

✦ Procedure:

Preparation

Base render finish JUBIZOL Finish 1.0 mm smoothed with a clean stainless-steel smoothing trowel and tinted to the desired grout colour shade.

Application

- Place a self-adhesive stencil "stone wall" on the surface.
- Apply a second coat of JUBIZOL Decor Smooth (in a different colour shade) over the stencil.
- Remove the stencils immediately after the application.
- Drying time: 24 hours.


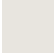





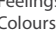


Finishing

- If desired, individual "stones" can be additionally patinated with DECOR Antique or DECOR Acrylcolor.

✦ Tools:

- stainless-steel smoothing trowel
- "stone wall" stencil

Selected combinations of shades according to JUB colour chart:

JUBIZOL Finish S 1.0 mm		JUBIZOL Decor smooth	
joint colour shade		stone colour shade	
050D (FF)		050F (FF)	
125D (HC)		125F (HC)	
WHITE		060E (FF)	
		225E (HC)	
WHITE		020F (FF)	
		020F (HC)	

*FF - Favourite Feelings colour chart
HC - Home of Colours colour chart.



Calculation of material consumption for executing the technique:

Product	Consumption
JUBIZOL Decor smooth	1.7 kg/m ² for 1 mm of thickness

WOOD

Wooden planks imitation

✦ Procedure:

Preparation

- Base render finish (S1.0 / S1.5 mm).

Application

- Apply JUBIZOL Decor art (white) in a thickness of 2-3 mm.
- Immediately start imprinting the stencils.

Structuring

- Imprint the rubber stencil into the compound and smooth it with a rubber roller to create a wood relief.
- Remove the template by twisting it and clean it with a brush and water after each imprint.
- Imprinting can be done vertically, horizontally, or at an angle.
- Drying time: 1 day for each mm of thickness.

Finishing

- 1x application of JUBIN Lasur with a sponge.
- Apply in the direction of the wood structure, leave more coating in the hollows and lightly wipe the bumps for a natural look.

✦ Tools:

- Stainless-steel smoothing trowel
- Aluminium batten
- Wood stencil - JUBIZOL matrix wood
- Sponge for tiles

Selected combinations of colour shades according to JUB colour chart:

JUBIZOL Decor art	JUBIN Lasur
230E (FF) 465D (HC)	1001
160E (FF) 215F (HC)	1
230D (FF) 465C (HC)	2
160D (FF) 215E (HC)	93
	6
	3
	9
	4

*FF - Favourite Feelings colour chart
HC - Home of Colours colour chart.



Calculation of material consumption for executing the technique:

Product	Consumption
JUBIZOL Decor art	1.7 kg/m ² for 1 mm of thickness
JUBIN Lasur	60-80 ml/m ²



JUBIZOL Decor

FREE-STYLE

Free structured techniques

FREE-STYLE

Free structured techniques

The technique is based on an unstructured, freehand-applied coat that gives the surface a distinct hand-crafted and authentic character. Intentional random movements, using a trowel, brush, or spatula, create uneven textures that initially seem lively and unpredictable. However, from a distance, these subtle movements connect into a harmonious pattern that adds depth, dynamic, and a subtle visual rhythm to the facade. The result is a surface that appears alive, natural, and modern – like an artistic impression that changes with the viewer's perspective.



FREE-STYLE 1



FREE-STYLE 2



FREE-STYLE 3

FREE-STYLE - 1

Finely wrinkled surface

✦ Procedure:

Preparation

Base render finish (S1.0 / S1.5 mm).

Application

- Apply JUBIZOL Decor smooth in a thickness of 1–2 mm with a steel smoothing trowel and level the surface immediately.

Structuring

- Imprint even patterns into the fresh render finish using a tool: Decoration tampon
- Option 2: For a slightly different look, you can roll the surface with a roller: DECOR bonded natural leather

✦ Tools:

- Stainless-steel smoothing trowel
- DECOR roller bonded natural leather (190mm)
- Decoration tampon



Calculation of material consumption for executing the technique:

Product	Consumption
JUBIZOL Decor smooth	1.7 kg/m ² for 1 mm of thickness

*For executing the technique, we can choose any colour shade from the available shades according to JUB colour chart.

FREE-STYLE - 2

Rough spatula technique

✦ Procedure:

Preparation

Base render finish (S1.0 / S1.5 mm).

Application

- Apply JUBIZOL Decor art in a thickness of 2–3 mm with a steel smoothing trowel and level the surface immediately.

Structuring

- Structure the fresh render finish with a stainless-steel smoothing trowel – either in a structured manner or randomly.
- Smooth in the same or different directions, depending on the desired look.

Finishing

- If necessary, further shape the structure while the render finish is still fresh.

✦ Tool:

- Stainless-steel smoothing trowel

Calculation of material consumption for executing the technique:

Product	Consumption
JUBIZOL Decor art	1.5 kg/m ² for 1 mm of thickness

*Choose any colour shade from the selection of possible shades according to JUB colour chart

FREE-STYLE - 3

Fine spatula technique

✦ Procedure:

Preparation

Base render finish (S1.0 / S1.5 mm). It should be of a similar colour shade as the final finish.

Application

- Apply JUBIZOL Decor art in a thickness of 2–3 mm with a steel smoothing trowel and immediately level the surface.

Structuring

- Apply lumps of render finish with a diameter of ~10 cm on the fresh base, randomly, to cover about 50 % of the surface.
- Reduce (make thinner) each lump with a spatula to a thickness of 1–3 mm.
- Then immediately smooth them lightly with a wide painter's brush (moisten gently with water if necessary).
- Blur the edges so they blend seamlessly with the substrate, the transitions should be soft.

Finishing (if desired)

- Create a slightly spotted final surface.
- DECOR Antique (tinted) applied unevenly with a roller and immediately blurred with a sponge.

✦ Tools:

- stainless-steel smoothing trowel
- wide painter's brush or sponge for cleaning ceramics
- masonry trowel

Calculation of material consumption for technique execution:

Product	Consumption
JUBIZOL Decor art	1.7 kg/m ² for 1 mm of thickness
DECOR Antique (tinted)	100 ml/m ² for the first coat and 60 ml/m ² for each subsequent coat

*For executing the technique, we can choose any colour shade from the range of possible shades according to JUB colour chart.





JUBIZOL Decor

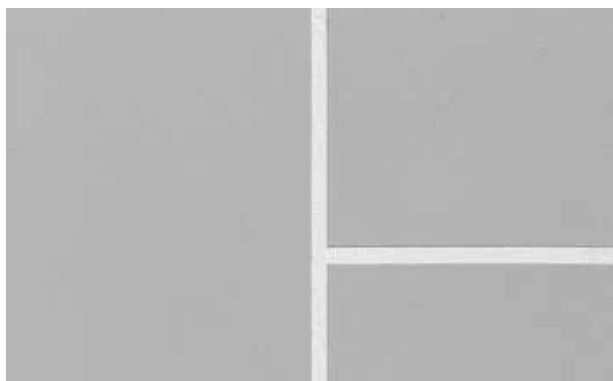
PANELS

Panels and boards look

PANELS

Panels and boards look

Facade surfaces designed with different fields that create an illusion as if the facade is composed of individual panels and boards. By combining smooth textures, precise lines, and geometric shapes, we achieve an elegant look that highlights the fragmentation and rhythm of the facade while allowing for a creative interpretation of the building's volume.



PANELS - 1



PANELS - 1

Facade panels

✦ Procedure:

Preparation

Base render finish (S1.0 / S1.5 mm) should be of a similar colour shade as the final finish.

Application

- 2x application of JUBIZOL Decor smooth in a thickness of ~1 mm with a steel smoothing trowel (in the shade of the joint).
- Level the surface immediately, drying time is 24 hours for each coat.

Structuring

- At the places where joints should be visible, stick self-adhesive protective tape 6 - 10 mm wide (different surface shapes - rectangles, triangles, hexagons, or other arbitrary geometric shapes can be created from the tape).
- 2x application of JUBIZOL Decor smooth (in the shade of the surface), we iron it in all directions with a steel smoothing trowel and level the surface as much as possible.
- Immediately after each application, remove the adhesive tape.
- Drying time: 24 hours for each coat.

✦ Tools:

- stainless-steel smoothing trowel
- self-adhesive protective tape 6 - 10 mm wide
- special-purpose stronger self-adhesive tape or pre-prepared stencils



Calculation of material consumption for executing the technique:

Product	Consumption
JUBIZOL Decor smooth	1.7 kg/m ² for 1 mm of thickness

*For executing the technique, we can choose any colour shade from the available shades according to JUB colour chart.





JUBIZOL Decor

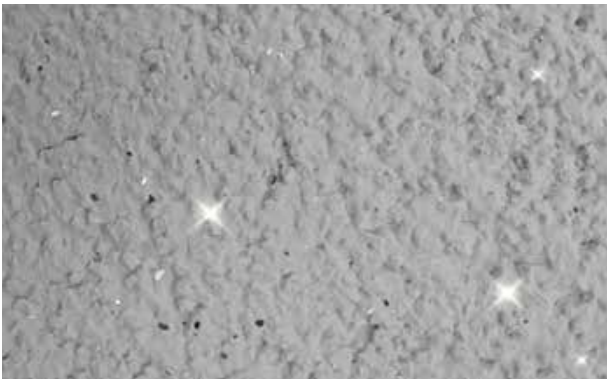
GLITTER

Glitter

GLITTER

Glitter

The discreet yet very special lustre enabled by glitter on the facade surface will attract many gazes. The shimmering effect is lively and it constantly changes, just as the direction and intensity of the lighting changes. This technique adds a layer of visual dynamics to the facade surface, imparting a sense of refinement or extravagance, depending on the chosen colour shade and glitter intensity. The glittering effect emphasizes the texture, adding a touch of playfulness and modernity to the building.



GLITER - 1



GLITTER

Glitter light / dark

✦ Procedure:

Preparation

Fresh application of any JUBIZOL decorative render finish structured to your taste.

Application

- We spray the glitter onto the fresh decorative render finish.
- Use a pneumatic spray gun. We recommend a nozzle size of 4–6 mm and a working pressure of 2.0 to 3.0 bar.

Structuring

- Apply with circular, vertical, or horizontal movements at a distance of 30–50 cm.
- Use the same application method all over the building to achieve a uniform final look.

Note: Glitter can also be sprayed into a fresh, more substantial second coat of JUB micro-reinforced facade paints.

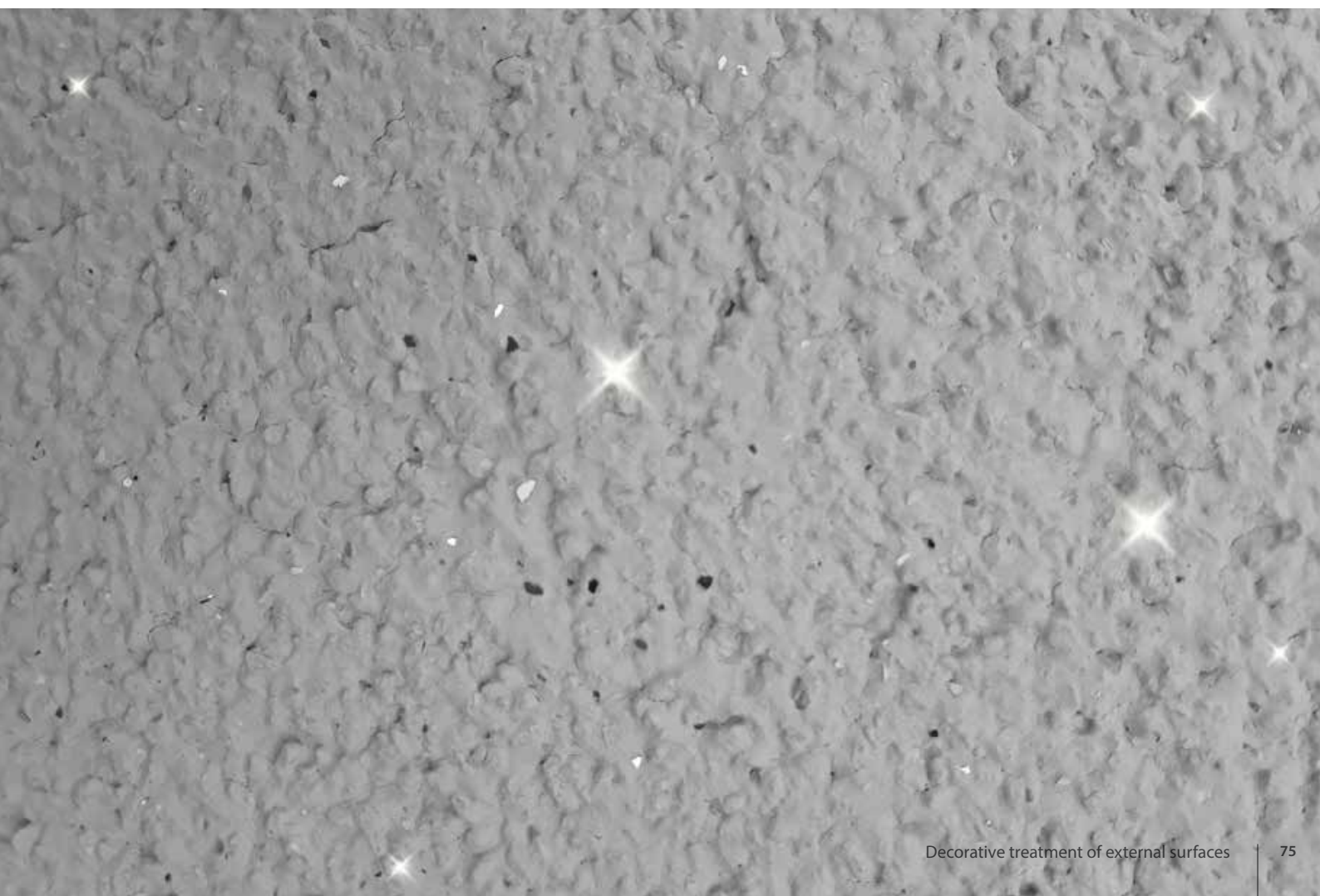
✦ Tools:

- stainless-steel smoothing trowel
- funnel compressed air spray gun

Calculation of material consumption for technique execution:

Product	Consumption
JUBIZOL glitter	100 - 250g/m ²
JUBIZOL Dark glitter	100 - 250g/m ²

*For executing the technique, we can choose any colour shade from the range of possible shades according to JUB colour chart.



Description	SAP code	Name	
Stainless-steel smoothing trowel	5900069	SMOOTHING TROWEL, STAINLESS/G 130x 280 mm	
Plastic trowel	5901599	SMOOTHING TROWEL PROFI 280 x 140 mm	
Rounded steel trowel	5916862	SMOOTHING TROWEL DOUBLEFLEX INOX 350X110 mm	
DECOR roller with plywood natural leather (190 mm)	5900064	DECOR ROLLER 190 mm	
JUB facade roller 250	5901141	Facade roller polyamide green-yellow-250	
Brush for decoration	5900067	BRUSH FOR DECORATION 180 mm	
Decoration brush 15 x 15 cm	5901145	BRUSH FOR DECORATION 15 x 15 mm	
Tool - wood effect tampon	5900065	WOOD EFFECT TAMPON	
Decorative brush 220 x 20 mm	5901152	DECORATIVE BRUSH 220 X 20 mm	
Metal comb (width 30 cm, notches 4x80 mm)	5903827	RENDER FINISH COMB 300 mm INOX	

Stencil for stone - JUBIZOL matrix panel stone	5901012	JUB DECOR MATRIX – PANEL STONE	
Sponge for tiles	5900025	SPONGE FOR TILES 165 x 115 x 70 mm	
JUBIZOL Stencil for brick pattern	5900675	JUBIZOL STENCIL BRICK STAND. 103,5x88 cm (SZCS)	
JUBIZOL matrix wood	5901013	JUB DECOR MATRIX - WOOD	
Decorative glove	5900038	DECORATIVE GLOVE	
Airbrush on compressed air	5902440	GRACO SPRAY GUN FOR GLITTER	
Decorative tampon 20x20 cm	5900062		
DECOR roller 200 mm natural leather	5900063		
JUBIZOL stone stencil 98.2x68.2 (szkl)	5900853		
Road broom			







JUB d.o.o.

Dol pri Ljubljani 28,
SI-1262 Dol pri Ljubljani

T: 080 15 56, 01 588 4280

E: info@jub.eu